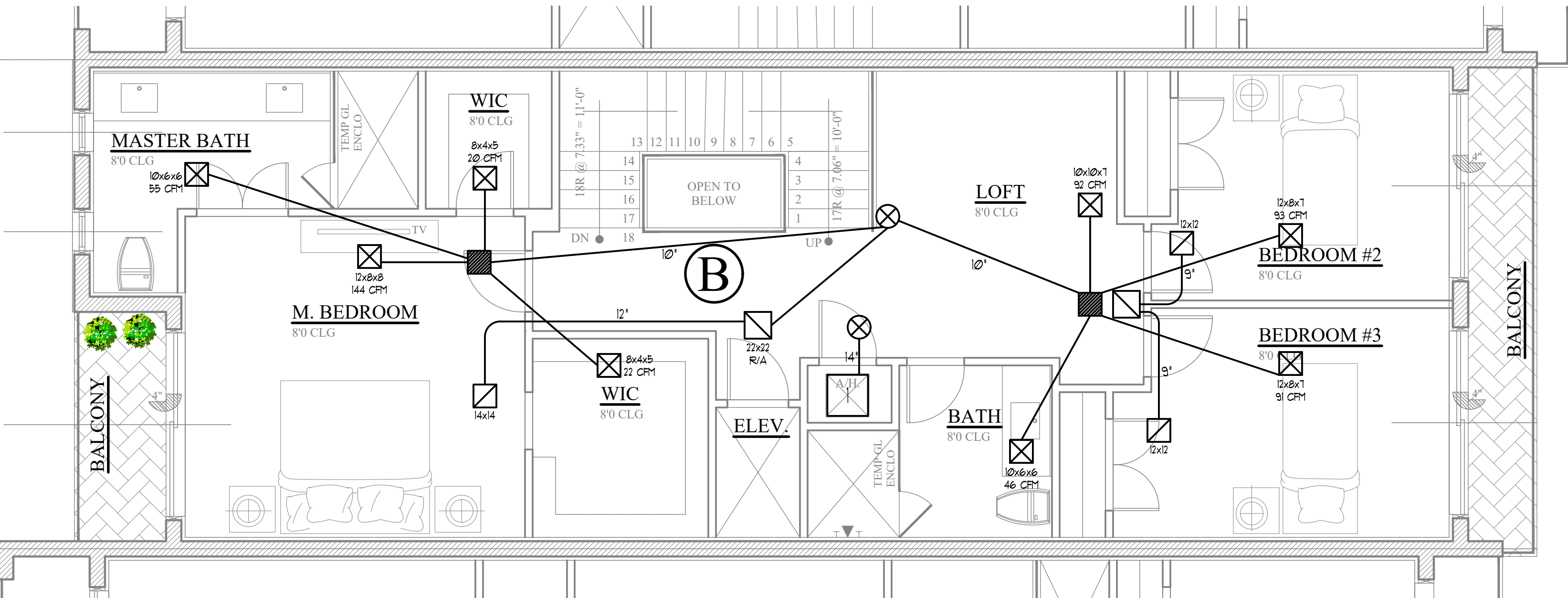


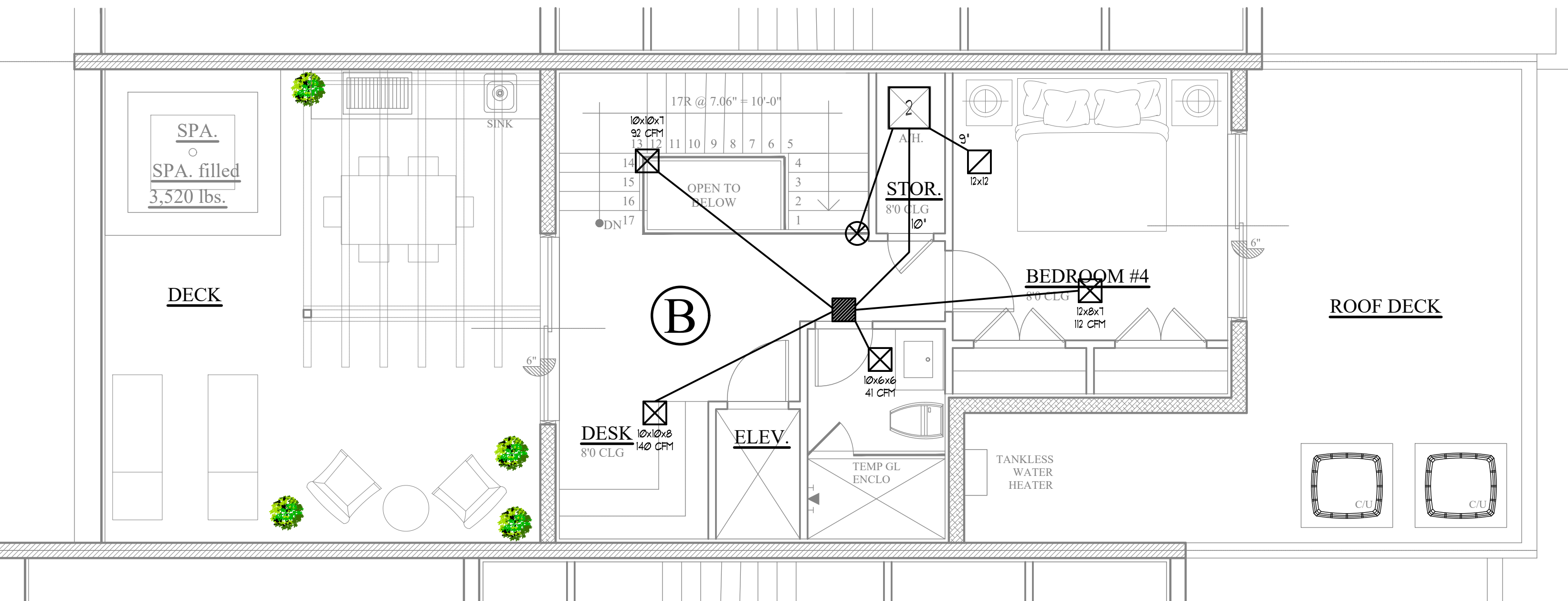
UNT-B 1st. FLOOR MECHANICAL PLAN

SCALE: 1/4" = 1'-0"



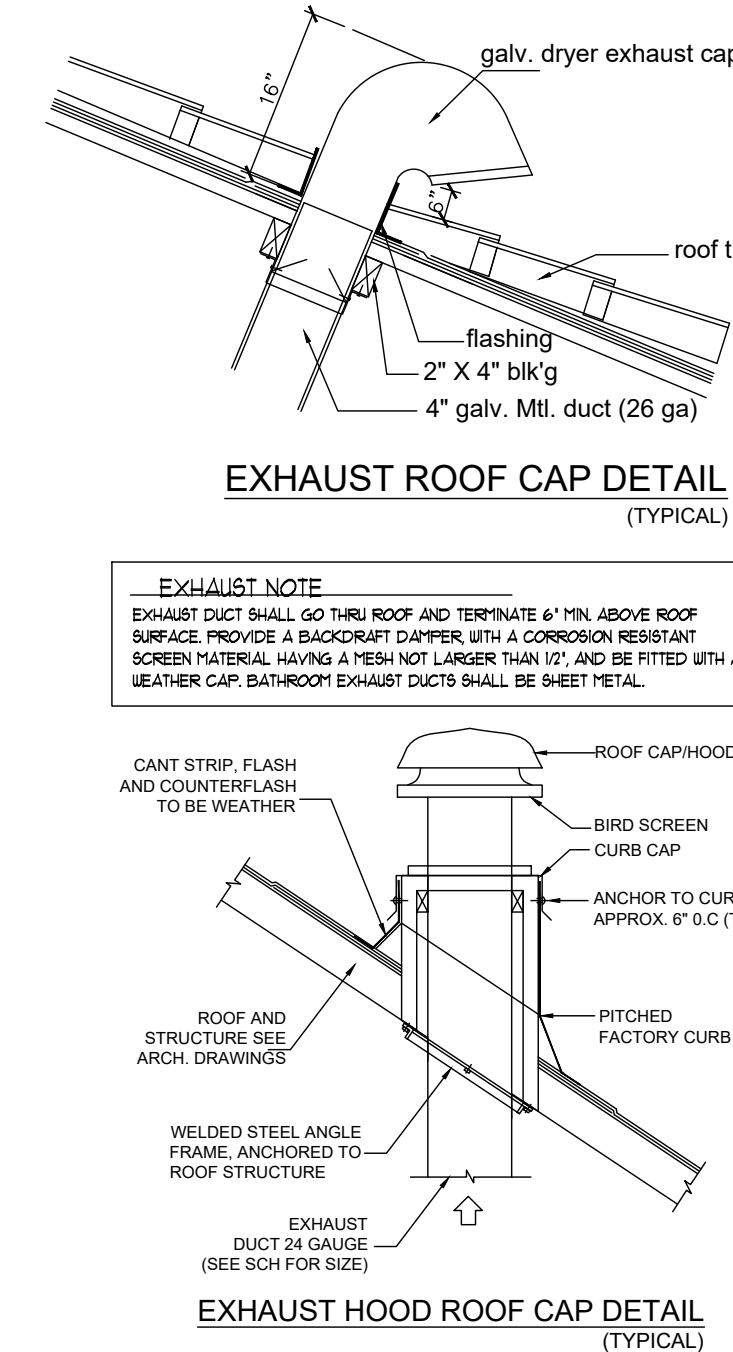
UNT-B 2dn. FLOOR MECHANICAL PLAN

SCALE: 1/4" = 1'-0"



UNT-B 3rd. FLOOR MECHANICAL PLAN

SCALE: 1/4" = 1'-0"



A/C NOTE:
A/C MUST HAVE PROGRAMMABLE THERMOSTAT
125° S.F. WATER GAUGE

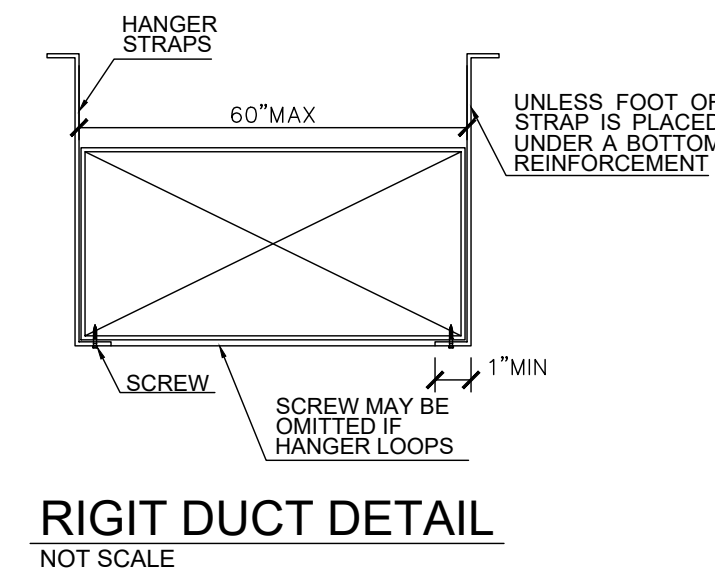
A/C STATIC PRESSURE
125° S.F. WATER GAUGE

AUXILIARY DRAIN PAN
AUXILIARY DRAIN PAN SHALL HAVE A MINIMUM DEPTH OF 1-1/2" AND SHALL NOT BE LESS THAN 3" LARGER THAN UNIT OR COIL DIMENSIONS IN WIDTH AND LENGTH AND SHALL BE CONSTRUCTED OF NOT LESS THAN 24 GAUGE GALVANIZED SHEET METAL

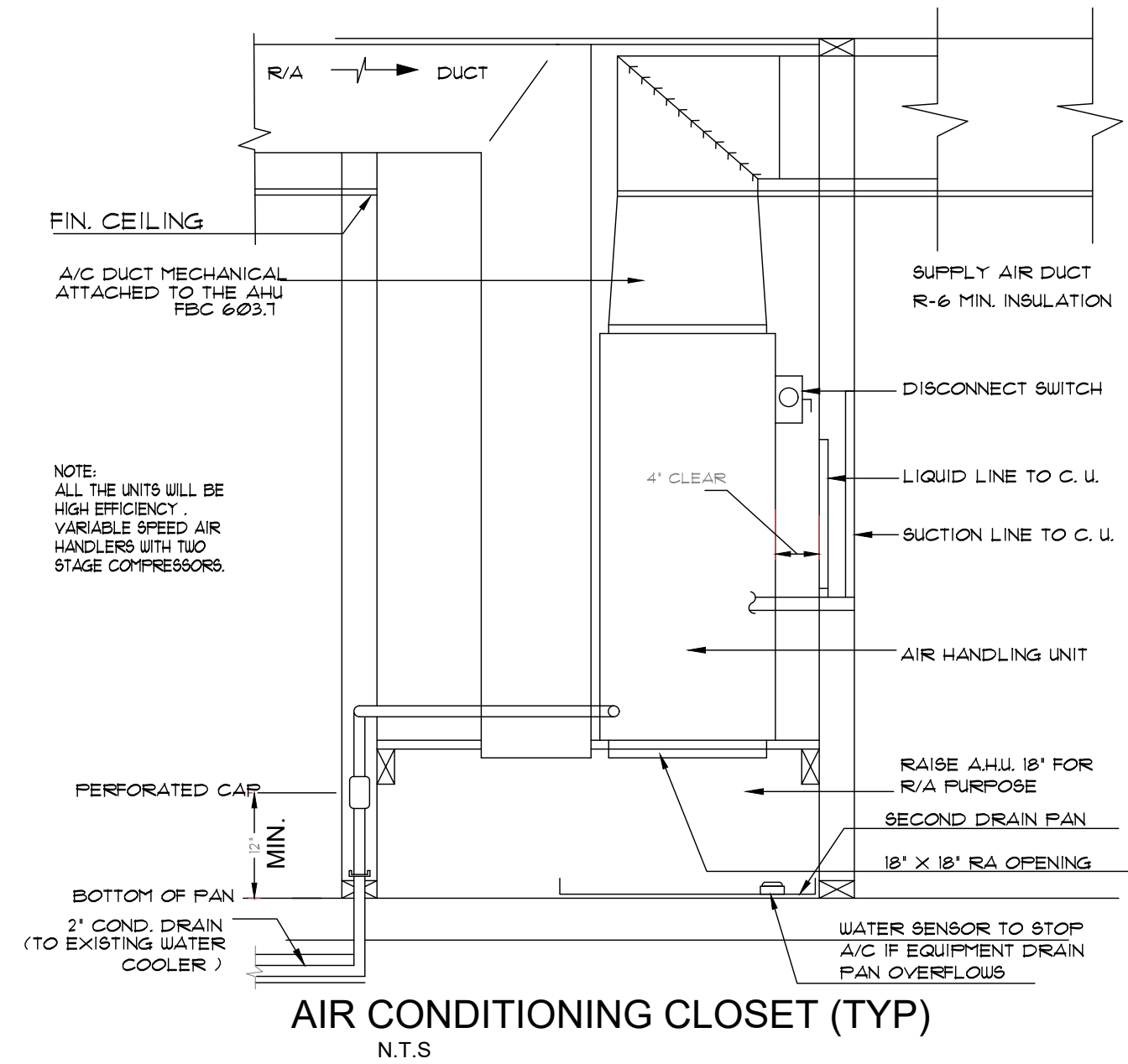
BATHROOM EXHAUST
BATHROOM EXHAUST DUCT SHALL GO THRU ROOF AND TERMINATE 6" MIN. ABOVE ROOF SURFACE. PROVIDE A BACKDRAFT DAMPER, WITH A CORROSION RESISTANT SCREEN MATERIAL HAVING A MESH NOT LARGER THAN 1/2", AND BE FITTED WITH A WEATHER CAP. BATHROOM EXHAUST DUCTS SHALL BE SHEET METAL

EXHAUST FAN SCHEDULE		
UNIT SYMBOL	EF-1	EF-2
LOCATION	KITCHEN	BATHROOMS
MANUFACTURE	BROAN	BROAN
MODEL	EW60SSS	XB50
TYPE	ROOF	CEILING
FAN CFM	500	50
DUCT SIZE	6"	4"
DAMPER INCLUDED	YES UNIT IF AUTOMATIC MAKE-UP AIR DAMPER	N/A
VOLTS	120	120
AMPS	2.88	0.3
SONES	10.5 HIGH 2.5 LOW	0.3

HVAC DESIGN REQUIRED	YES	NO
DUCT SMOKE DETECTOR	✓	
FIRE DAMPER(S)	✓	
SMOKE DAMPER(S)	✓	
FIRE RATED ENCLOSURE	✓	
FIRE RATED ROOF/FLOOR CEILING ASSEMBLY	✓	
FIRE STOPPING	✓	
SMOKE CONTROL	✓	



AREA CALCULATION: B	
1st FLOOR - A/C	1,040 S.F.
2nd FLOOR - A/C	1,146 S.F.
3rd FLOOR - A/C	584 S.F.
TOTAL - A/C:	2,770 S.F.
GARAGE	216 S.F.
ENTRY	40 S.F.
PATIO	64 S.F.
BALCONY 1	41 S.F.
BALCONY 2	64 S.F.
BALCONY 3	777 S.F.
UPPER DECK	584 S.F.
SUB-TOTAL:	1,786 S.F.
GRAND TOTAL:	4,456 S.F.



AHU NOTE:
AHU CLOSET COMPLY WITH FBCR M 1305.11 FURNACES AND AIR HANDLERS FURNACES AND AIR HANDLERS WITHIN COMPARTMENTS OR ALCOVES SHALL HAVE A TOTAL WIDTH OF THE ENCLOSING SPACE BEING AT LEAST 3" INCHES WIDER THAN THE FURNACE OR AIR HANDLER